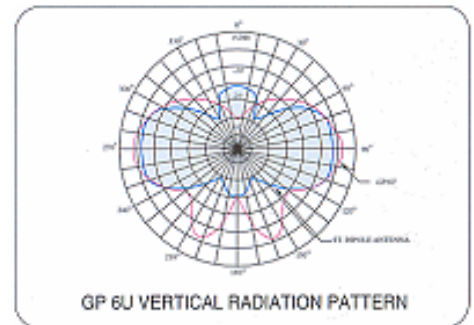


## BASE STATION ANTENNAS

### ● GP Antennas

The property of GP Ant. is highly stable and 100% waterproof and can be used for various purposes. Also, it is easy to install with our Mounting Clamp. Moreover, its efficiency for use in Land Mobile Radio System is quietly high and it shows a strong stability on its own frequency. Especially, its divided structure is easy for movement and installation. The grounded folded GP Ant. is specially designed for the general base station purpose due to its omni-directional and vertically polarized properties.



MODEL	AVAILABLE FREQUENCY (MHz)	IMPEDANCE (Ω)	VSWR 1:	GAIN (dBi)	MAX POWER INPUT (WATT)	RADIATION	POLARIZATION	BAND WIDTH (MHz)	CONNECTOR	HEIGHT (m)	WEIGHT (Kg)
GP-9V	VHF	50	1.5	9.0	100	OMNI	VERTICAL	1.5	N/M TYPE	4.5	1.7
GP-9U	UHF	50	1.5	9.0	100	OMNI	VERTICAL	3.0	N TYPE	4	1.7
GP-6V	VHF	50	1.5	6.0	100	OMNI	VERTICAL	1.5	N/M TYPE	2.8	1.5
GP-6U	UHF	50	1.5	6.0	100	OMNI	VERTICAL	3.0	N TYPE	2.8	1.5
GP-3V	VHF	50	1.5	3.0	100	OMNI	VERTICAL	1.5	N/M TYPE	1.4	1.2
GP-3U	UHF	50	1.5	3.0	100	OMNI	VERTICAL	3.5	N TYPE	1.4	1.2
GP-0V	VHF	50	1.5	0	100	OMNI	VERTICAL	2	N/M TYPE	0.9	1
GP-0U	UHF	50	1.5	0	100	OMNI	VERTICAL	4	N TYPE	0.9	1